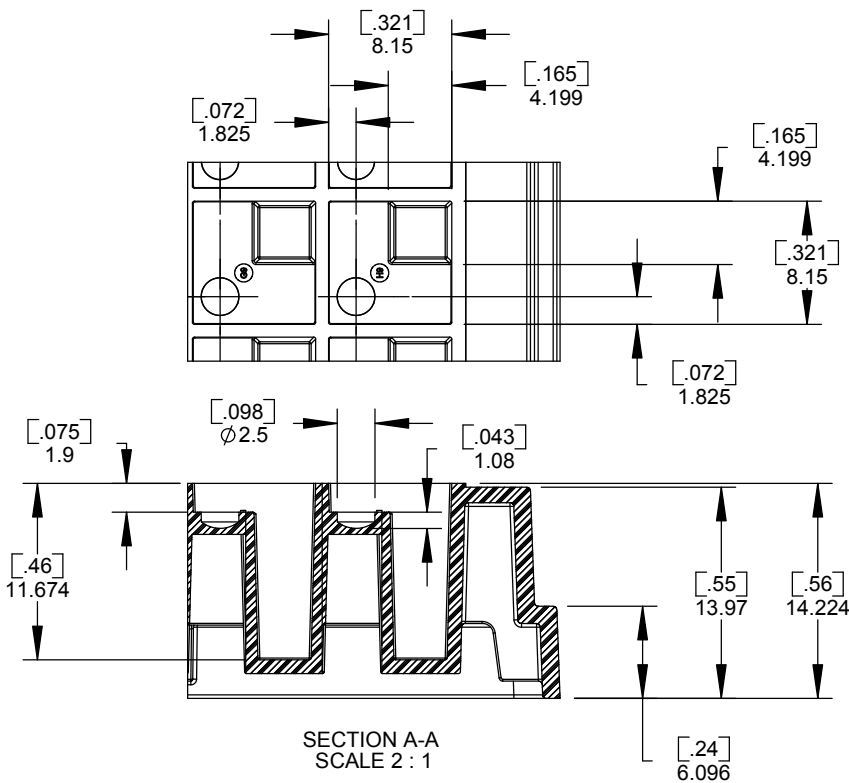
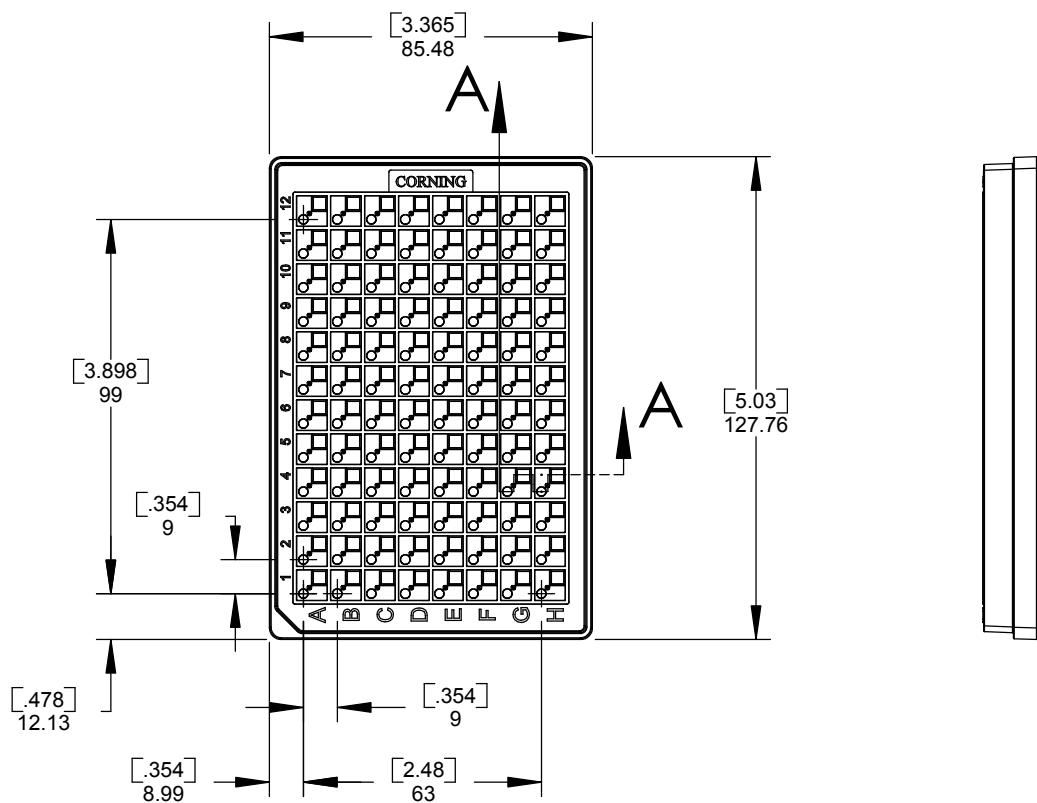


REVISIONS				
REV	DR	DESCRIPTION	DATE	APPRVD
1	DAK	NEW DRAWING	7/9/04	---



NOTES:

1. DIMENSIONS ARE IN MILLIMETERS.
2. DIMENSIONS IN PARENTHESIS ARE IN INCHES.
3. REFER TO PRODUCT DESCRIPTION FOR FURTHER PRODUCT INFORMATION.
4. PROTEIN WELL VOLUME: 4 µL
5. RESERVOIR WELL VOLUME: 130 µL



CORNING
Life Sciences
45 Nagog Park
Acton, MA 01720

TOLERANCES - UNLESS SPECIFIED
DIMENSIONS ARE NOMINAL
FOR REFERENCE ONLY.

CUSTOMER SPEC.

DRAWN DAK DATE 7/8/04
CHKD ---
MATL SEE PRODUCT DESCRIPTION

PROD CODE 144 SHEET 1 OF 1

PLATE, 96 WELL, CRYSTALLOGRAPHY
SITTING DROP
1 WELL, 1 RESERVOIR

DWG01871 REV 1